

ULTIMATE LUXURY OPTIMAL CARE



Welcome to Greenberg 14 South, a very special luxury accommodations wing at NewYork-Presbyterian/Weill Cornell—New York City's premier medical center.

Here, along whisper-quiet halls, in hotel-like rooms and suites filled with amenities, patients receive renowned state-of-the-art treatment with a level of comfort that is redefining hospital care.

The Experience



NewYork-Presbyterian's exclusive, new, twenty-room in-patient unit

Greenberg 14 South

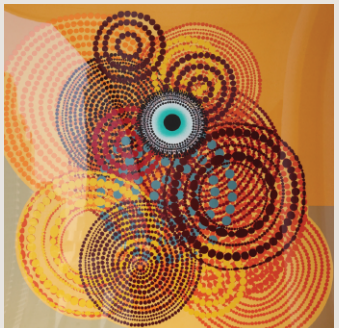
was created to enhance the hospital experience for patients and their visitors. Everything from the attentive and welcoming staff to the interior design details has been carefully selected to provide a healing environment. Here, in quiet elegance, patients will receive Weill Cornell's world-renowned care from expert practitioners.

The Space

**Greenberg 14 South includes
twenty spacious and sunlit rooms.**

There are...

- Two large corner suites
- Three junior suites
- Nine river view rooms, with six of these having interconnecting doors that enable a two-room configuration
- Six standard suites, all with incredible views



Amenities and Services

Amenities and services for Greenberg 14 South's luxury rooms and suites include

- A concierge to assist patients and their visitors
- Business offices/meeting rooms available on the floor
- A dedicated chef, with a team of experienced culinary professionals; state-of-the-art kitchen
- Private dining rooms available for patients and guests
- An extensive menu, offering meals to accommodate many individual food preferences and requirements
- High-end toiletries gift pack
- Wall-mounted HDTV, with cable connection
- DVD/VHS player
- Luxury marble bathroom, with euro-style walk-in shower
- Elegant furnishings, inclusive of dining table and chairs
- Queen-size sleepers, leather sofas, reclining chairs for visitor sleepovers
- A safe for each patient's valuables
- Internet, Intranet, and telephone service
- Mini-refrigerator
- Frette bed linens
- Beautiful, original framed artwork



Extras Matter

The health care professionals, chefs, cooks, guest services team, architects, and designers have all worked to make Greenberg 14 South a calm and healing environment. Amazing things are happening here.



Greenberg 14 South

NewYork-Presbyterian Hospital
525 East 68th Street
New York, New York 10065