

SURGICAL APPROACHES to the SKULL BASE • Course Agenda

Friday, February 26, 2010

Orbito-Zygomatic Approach and Exposure of the Parasellar Region

- 7:15–7:45 AM Registration and Breakfast at Anspach Laboratory
- 7:45–8:00 AM **Welcome and Introduction**
Philip E. Stieg, PhD, MD
- 8:00–9:00 AM **3D Lecture and Virtual Reality: Surgical Anatomy of the Orbito-Zygomatic, Pericavernous and Transcavernous Approach, Parasellar Region**
Antonio Bernardo, MD
- 9:00–9:30 AM **Extended Pterional Approach for Parasellar Lesions**
Maurizio Fornari, MD
- 9:30–9:45 AM Break
- 9:45–10:15 AM **Microsurgical Approach to the Cavernous Sinus**
Luc De Waele, MD
- 10:15–10:45 AM **How to Avoid Complications in Anterior Skull Base Surgery**
Alessandro Ducati, MD
- 11:00 AM–1:00 PM **Hands-On Laboratory: Fronto-Orbito-Zygomatic Craniotomy**
P. Stieg, A. Bernardo, O. Aponte, C. Bruce, E. Carvallo, G. Catapano, P. Clavel, L. De Waele, A. Ducati, M. Fornari, T. Kawase, E. Passacantilli, S. Selesnick, A. Schwarz, A. Visca
- 1:00–2:00 PM Lunch and Case Presentation
- 2:00–6:00 PM **Hands-On Laboratory: Anterior and Posterior Clinoidectomy, Exposure of the Cavernous Sinus and Parasellar Region**
A. Bernardo, P. Stieg, O. Aponte, C. Bruce, E. Carvallo, G. Catapano, P. Clavel, L. De Waele, A. Ducati, M. Fornari, T. Kawase, E. Passacantilli, S. Selesnick, A. Schwarz, A. Visca
- 7:30 PM Dinner

Saturday, February 27, 2010

Temporal Bone and Transpetrosal Surgical Routes to the Skull Base

- 7:30–8:00 AM Breakfast at Anspach Laboratory
- 8:00–9:00 AM **3D Lecture and Virtual Reality: Surgical Anatomy of Temporal Bone and Transpetrosal Approaches**
Antonio Bernardo, MD
- 9:00–9:30 AM **Anterior Transpetrosal Approaches**
Takeshi Kawase, MD, PhD
- 9:30–9:45 AM Break
- 9:45–10:15 AM **Posterior Transpetrosal Approaches**
Samuel H. Selesnick, MD, FACS
- 10:15–10:45 AM **Lessons Learned in Transpetrosal Surgery**
Takeshi Kawase, MD, PhD
- 11:00 AM–1:00 PM **Hands-On Laboratory: Subtemporal Approach – Middle-Fossa Approach with Anterior Petrosectomy**
P. Stieg, A. Bernardo, O. Aponte, C. Bruce, E. Carvallo, G. Catapano, P. Clavel, L. De Waele, A. Ducati, M. Fornari, T. Kawase, E. Passacantilli, S. Selesnick, A. Schwarz, A. Visca
- 1:00–2:00 PM Lunch and Case Presentation
- 2:00–6:00 PM **Hands-On Laboratory: Posterior Petrosectomy: Drilling the Mastoid, Facial Nerve Exposure, Translabyrinthine Dissection, Exposure of the Jugular Bulb**
A. Bernardo, P. Stieg, O. Aponte, C. Bruce, E. Carvallo, G. Catapano, P. Clavel, L. De Waele, A. Ducati, M. Fornari, T. Kawase, E. Passacantilli, S. Selesnick, A. Schwarz, A. Visca

Sunday, February 28, 2010

Combined Transpetrosal Surgical Exposures–Jugular Foramen and Far-lateral Approaches

- 7:30–8:00 AM Breakfast at Anspach Laboratory
- 8:00–9:00 AM **3D Lecture and Virtual Reality: Surgical Anatomy of Far-Lateral Approach, Jugular Foramen and Lateral Cervical Region**
Antonio Bernardo, MD
- 9:00–9:30 AM **Lateral Cervical Dissection for Carotid Endarterectomy**
Philip E. Stieg, PhD, MD
- 9:30–9:45 AM Break
- 9:45–10:15 AM **Far Lateral Transcondylar Approach**
Luc De Waele, MD
- 10:15–10:45 AM **Combined Transtentorial Surgical Approaches**
Philip E. Stieg, PhD, MD
- 11:00 AM–1:00 PM **Hands-On Laboratory: Lateral Cervical Dissection – Suboccipital Approach**
P. Stieg, A. Bernardo, O. Aponte, C. Bruce, E. Carvallo, G. Catapano, P. Clavel, L. De Waele, A. Ducati, M. Fornari, T. Kawase, E. Passacantilli, S. Selesnick, A. Schwarz, A. Visca
- 1:00–2:00 PM Lunch and Case Presentation
- 2:00–6:00 PM **Hands-On Laboratory: Far-lateral Approach**
A. Bernardo, P. Stieg, O. Aponte, C. Bruce, E. Carvallo, G. Catapano, P. Clavel, L. De Waele, A. Ducati, M. Fornari, T. Kawase, E. Passacantilli, S. Selesnick, A. Schwarz, A. Visca



Weill Cornell Medical College

ANSPACH

NewYork-Presbyterian Hospital
Weill Cornell Medical Center

www.cornellneurosurgery.com/skullbasesurgery

REGISTRATION FORM

Surgical Approaches to the Skull Base • February 26–28, 2010

REGISTRATION:

- Register On-line at [www.cornellneurosurgery.com/skullbase surgery](http://www.cornellneurosurgery.com/skullbase_surgery)
- Mail check/fax form to:

Skull Base Surgery Course Department of Neurological Surgery Weill Cornell Medical College 525 East 68th Street, Box 99 New York, NY 10065 Fax: 212-746-8947	For Registration Information: Pauline Samuels Tel: (212) 746-2203 Email: pas2021@med.cornell.edu
---	--

Please print clearly

LAST NAME FIRST NAME MI

DEGREE

OFFICE ADDRESS

CITY/STATE/ZIP

DAYTIME PHONE FAX NUMBER

EMAIL

- Fees:** \$1800 Physicians \$1400 Residents & Fellows
 \$500 Lecture only Course Dinner/no charge Friday, Feb. 26

(Full registration includes: breakfast, lunch, coffee breaks on all 3 days; 1 special event dinner; new color illustrated Dissection Manual)

Method of Payment:
Make checks payable to **Weill Cornell Medical College**. For international attendees, please use wire transfer or check in U.S. dollars.

Credit Card: Charge \$ _____ to Visa MasterCard

CARD NUMBER 4 DIGIT SECURITY CODE

EXPIRATION DATE

NAME ON CARD

AUTHORIZED SIGNATURE

Space is Limited: Registration is available only on a first-come, first-served basis. Written confirmation will be sent to all attendees. Number of participants: 30 surgeons • 15 workstations.

Cancellation/Refund Policy: An administrative fee of \$100.00 will be retained on all cancellations. All requests for refunds must be in writing and must be postmarked by February 6, 2010. After this date, no refunds are possible.

SURGICAL APPROACHES to the SKULL BASE

PHILIP E. STIEG, PHD, MD

ANTONIO BERNARDO, MD



**A Hands-On
cadaver workshop with
3D Virtual Reality**

**3-Day Course in Palm Beach Gardens, Florida
February 26–28, 2010**

Presented by:

Weill Cornell Medical College
in cooperation with **The Anspach Companies**

COURSE DIRECTORS

Philip E. Stieg, PhD, MD

Professor and Chairman
Department of Neurological Surgery
Weill Cornell Medical College
Neurosurgeon-in-Chief
NewYork-Presbyterian/Weill Cornell Medical Center

Antonio Bernardo, MD

Assistant Professor of Neurological Surgery
Director, Microneurosurgery Skull Base Laboratory
Department of Neurological Surgery
Weill Cornell Medical College
New York, NY

GUEST FACULTY

Luc De Waele, MD

Professor and Chairman
Department of Neurological
Surgery of St. Lucas Hospital
Ghent, Belgium

Takeshi Kawase, MD, PhD

Professor and Chairman
Department of Neurosurgery
Keio University School
of Medicine
Japan

Alessandro Ducati, MD

Professor and Chairman
Department of Neurosurgery
University of Torino
Italy

Maurizio Fornari, MD

Professor of State University
of Milano Medical School
Chief, Department of
Neurosurgery
Istituto Ortopedico Galeazzi
Milan, Italy



Weill Cornell Medical College

NewYork-Presbyterian Hospital
Weill Cornell Medical Center

www.cornellneurosurgery.com/skullbasesurgery

SURGICAL APPROACHES to the SKULL BASE

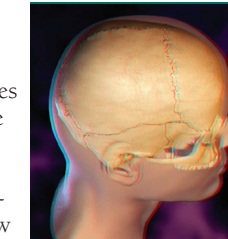
3-Day Course in Palm Beach Gardens • February 26–28, 2010

LOCATION: The Anspach Companies

4600 Riverside Drive,
Palm Beach Gardens, FL 33410

COURSE OBJECTIVES The objective of this surgical course is to improve patient care. Upon completion of this course, participants will be able to:

- Understand orbital anatomy and orbito-zygomatic osteotomies
- Describe cavernous sinus anatomy and surgical exposure
- Understand temporal bone anatomy and specify transpetrosal surgical approaches
- Describe and better understand cerebello-pontine anatomy
- Review jugular foramen anatomy and surgical exposure
- Describe far-lateral and transcondylar approaches



3-DAY COURSE DESCRIPTION The skull base surgical course features 3D technology and virtual reality to teach neurosurgeons and residents the visuospatial skills required to navigate through various skull base neuro-surgical approaches. The courses are given in our state-of-the-art surgical laboratory where each surgeon will work at a 3D interactive cadaver workstation. Surgeons can watch live 3D dissections on cadavers and can review the surgical anatomy on 3D interactive models before and during their own dissection. The combination of the 3D virtual reality environment and the cadaveric hands-on dissection will afford the surgeon excellent preoperative training and rehearsal of current, complex approaches in cranial base surgery.

STATEMENT OF NEED Developments in cranial base surgery continue to rapidly emerge. Mastering new approaches and technologies is an integral part of providing patients with the most current options for treatment. This course is intended to provide practicing neurosurgeons, otolaryngologists, fellows and residents in training with excellent preoperative training and rehearsal of current, complex approaches in cranial base surgery so they may best serve their patients.



TARGET AUDIENCE Practicing neurosurgeons, otolaryngologists, fellows and residents in training.

ACCOMMODATIONS **Palm Beach Gardens Marriott**, 4000 RCA Blvd., Palm Beach Gardens, FL 33410, (561) 622-8888. *Rooms have been set aside at these hotels for a discounted rate. To receive this special rate, you must specify that you are enrolled in the course "Surgical Approaches to the Skull Base" at The Anspach Companies.*

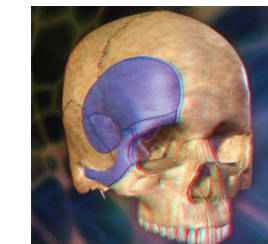
Other nearby hotels—*Beach/Waterfront Hotels* (within 6 miles):
Hilton Hotel on Singer Island, 3700 North Ocean Drive, Singer Island, FL 33404, (561) 848-3888 • **Resort Hotels: Resort at Singer Island**, 3800 N. Ocean Drive, Riviera Beach, FL 33404, (800) 325-3589.

ACKNOWLEDGEMENT Weill Cornell Medical College gratefully acknowledges funding in part provided by unrestricted educational grants from:



**Anspach
Zeiss
Integra
Covidien
Stryker**

**Mizuho America
AMT
BrainLAB
TruVision**



FOR MORE INFORMATION, CONTACT

Registration:

Pauline Samuels
Tel: (212) 746-2203
Email: pas2021@med.cornell.edu

Logistics:

Janice Imbert
Tel: (561) 627-1080
Fax: (561) 627-1265
janicei@anspach.com

FACULTY

COURSE DIRECTORS

Philip E. Stieg, PhD, MD

Professor and Chairman
Department of Neurological Surgery
Weill Cornell Medical College
Neurosurgeon-in-Chief
NewYork-Presbyterian/Weill Cornell Medical Center

Antonio Bernardo, MD

Assistant Professor of Neurological Surgery
Director, Microneurosurgery Skull Base Lab
Department of Neurological Surgery
Weill Cornell Medical College
New York

GUEST FACULTY

Luc De Waele, MD

Professor and Chairman
Department of Neurological Surgery
of St. Lucas Hospital
Ghent, Belgium

Takeshi Kawase, MD, PhD

Professor and Chairman
Department of Neurosurgery
Keio University School of Medicine
Japan

Alessandro Ducati, MD

Professor and Chairman
Department of Neurosurgery
University of Torino
Italy

Maurizio Fornari, MD

Professor of State University of Milano Medical School
Chief, Department of Neurosurgery
Istituto Ortopedico Galeazzi
Milan, Italy

WEILL CORNELL FACULTY

Samuel H. Selesnick, MD, FACS

Professor and Vice Chairman
Department of Otorhinolaryngology
Weill Cornell Medical College
NewYork-Presbyterian/Weill Cornell Medical Center

LAB FACULTY

Oscar Aponte, MD

Professor of Neurosurgery
Head of Neurosurgery
Hospital of San Pedro
Head of Neurosurgery
Clinica Palermo
Bogota, Colombia

Carl Bruce, MD

Consultant Neurosurgeon
Cerebrovascular and Skull Base Surgery
University Hospital of West Indies
Kingston, Jamaica

Pablo Clavel, MD

Attending Neurosurgeon
Department of Neurosurgery
Hospital of Sant Pau,
Barcelona, Spain

Ernesto Carvallo Cruz, MD

Professor of Neurosurgery
Hospital Vargas,
Escuela de Medicina J.M. Vargas -
University of Venezuela
Caracas, Venezuela

Emiliano Passacantilli, MD

Attending Neurosurgeon
Department of Neurosurgery
University "La Sapienza",
Rome, Italy

Anna Visca, MD

Department of Neurosurgery
University of Verona,
Verona, Italy

Giovanni Grasso, MD, PhD

Assistant Professor of Neurosurgery
Department of Clinic Neurosciences,
Neurosurgical Clinic
University of Palermo

Andreas Schwarz, MD

Head of Neurosurgery
Hospital of Bolzano
Italy

Giuseppe Catapano, MD

Head of Neurosurgery
Hospital of "G. Rummo"
Benevento, Italy



Weill Cornell Medical College
Department of Neurological Surgery
525 East 68th Street - Box 99
New York, NY 10065



ANSPACH